



# A Note from Our Rector

I'm excited to announce that in the last month, several new ministries have emerged or have re-established through the grace of God and the will of God's people:

## Episcopal Church Women (ECW)

I am excited that the Episcopal Church Women (ECW) have rejoined after many years in hiatus. Every women in the Episcopal Church is automatically a member of the ECW. The ECW comes together for fellowship and to raise funds for the church. Sara Gadeken has graciously agreed to head the meetings until a new leader is chosen. The ECW meets every second Saturday in St. Raphael's Rectory at 9:00 a.m. All women are invited.

Please contact Sara at [sgadeken@aol.com](mailto:sgadeken@aol.com)

## Lay Eucharistic Visitors (LEVs)

As of August 2015, Lay Eucharistic Visitors (LEVs) are available to go out with communion to our parishioners, who are unable to join us for

our Sunday Eucharists. In order to received communion,

please contact Larry Kilborn at [lar22dix@comcast.net](mailto:lar22dix@comcast.net) and Shelly Black at [shelleyblack@gmail.com](mailto:shelleyblack@gmail.com). Larry or Shelley will then set up communion kits to go out after the 8:00 a.m. or the 10:15 a.m. Eucharists.

## Youth Advisory Council (YAC)

The Youth Advisory Council meets every first Wednesday in St. Raphael's Rectory at 6:00 p.m. Please look in this Newsletter for a Calendar of future youth group activities. Please contact Robyn Mangham at [robynmangham@gmail.com](mailto:robynmangham@gmail.com) or Jennifer Francis at [jenniferfrancis872@yahoo.com](mailto:jenniferfrancis872@yahoo.com). We need all parents, grandparents and adult youth leaders to join us!

## Youth Group

Recently, the Youth Group had two excellent activities: 1) our first Campout in the Meadow on Saturday, July 18th. Thank you to the Stadlers, Herricks, Manghams and Cathleen McManus, who provided tents, cots, a fire ring,

### Inside this issue:

Message from the Rector	1
Church Staff and Vestry Members	3
Learning Opportunities	4
Book Club	5
Youth Group Calendar	11
Birthdays and Anniversaries	14
Calendar	15

### Special points of interest:

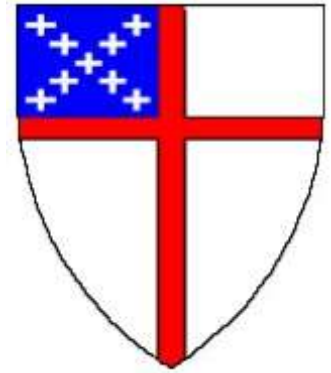
- *Youth Mission Trip Pictures*
- *Youth Group Star Gazing*
- *Meadow Services*
- *Kneelers*
- *A Birthday Invitation*

# A Note from Our Rector, continued

• games, s'mores, dinner, breakfast and overnight counselors and 2) our first youth mission trip (in many years) to Grand Junction from July 26th - August 1st. Annabelle, Dominic, Kaleb and I had a wonderful time working as summer camp counselors for underprivileged, young children at the Rocky Mountain Community and doing work projects for the RMC. Twenty-two youth attended from five Episcopal churches, did God's work and enjoyed the community of fellowship with each other. Thank you for your support of our youth group.

• God's Peace.

• Michael+



Church of the  
Transfiguration



Community



If you don't already have an account on our COT Realm Community, please contact David Black - [davidblack01@gmail.com](mailto:davidblack01@gmail.com) for assistance! It is a great way to stay connected!



• Hike-a-palians is an informal group of parishioners and friends who enjoy hiking in our nature's Cathedral!

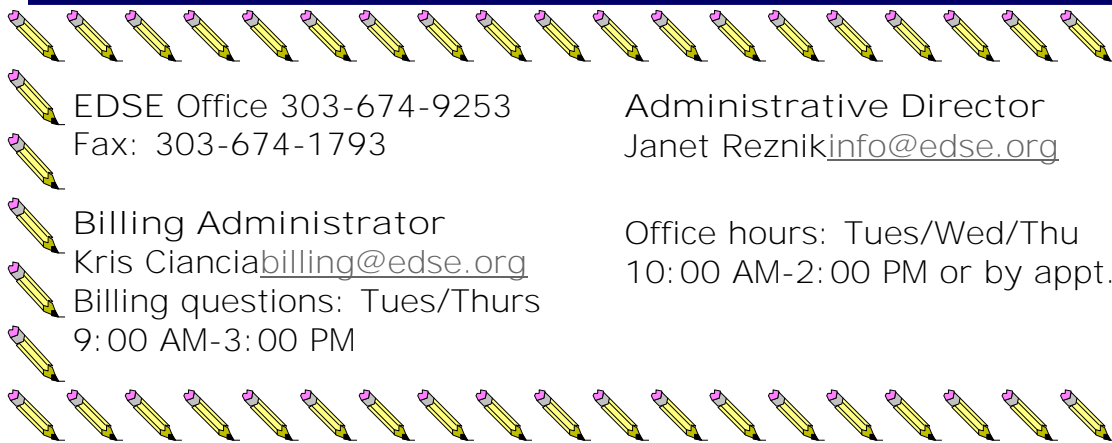
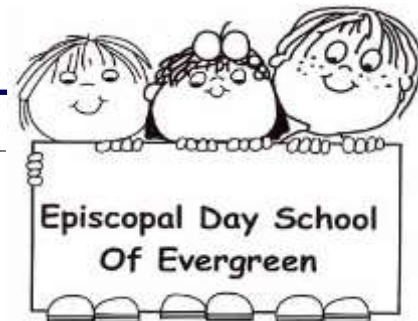
• The Hike-a-palians on Chief Mountain



Pictured left to right:  
Michael, Ed Work, Jerry Shrimpton, Tom Marker, Jim Stafford



# EDSE and Summer Services



EDSE Office 303-674-9253  
Fax: 303-674-1793

Administrative Director  
Janet Reznik [info@edse.org](mailto:info@edse.org)

Billing Administrator  
Kris Cianci [billing@edse.org](mailto:billing@edse.org)  
Billing questions: Tues/Thurs  
9:00 AM-3:00 PM

Office hours: Tues/Wed/Thu  
10:00 AM-2:00 PM or by appt.



## Services in the Meadow

The 10:15 service will be held in the meadow on  
**August 9th and September 13th.**

There will be a parish luncheon for **ALL**  
parishioners at 11:30  
in Douglas Hall on these Sundays.  
Please invite friends and neighbors  
to join us!

All are welcome!



### Church of the Transfiguration Staff and Vestry

Rector - The Rev. Michael McManus  
303-674-4904 ext. 11

Parish Administrator—Jerri Avery,  
303-674-4904 ext. 10

Organist & Choir Director—Bob Coursen,  
303-674-4904

EDSE Director—Janet Reznik,  
303-674-9253

Building & Grounds Administrator—  
Ken Schmidt, 303-598-6128

Rector Hours—M-Th 1-5

Office Hours:  
Monday 1-5

Tuesday 10-5

Wednesday 10-5

Thursday 12-7

[cotransfig@gmail.com](mailto:cotransfig@gmail.com)  
[www.church-transfig.net](http://www.church-transfig.net)  
[www.colorado-weddings.org](http://www.colorado-weddings.org)

Senior Warden: Cort Langworthy

Larry Kilborn, Ginny Leitz,  
Joe Kerper, David McDonald

Property: Bill Houston & Jerry  
Shrimpton

Treasurer—Derek Padgett

Vestry Clerk—Holly Hall-Perry





Join us for a class to learn more about our Book of Common Prayer! Sundays between services—September 13th through November 22nd.

Jesus and Me (JAM)  
A group for ages 11-13/middle school  
2<sup>nd</sup> and 4<sup>th</sup> Sundays beginning on September 27



*Lectio Divina*  
Please plan to join us on the first Saturday of the month at 9:00 am in the church.



## *Ham Salad Sandwich Filling for Fifty*

Combine:

**12 ½ cups fully cooked ground ham**

8 hard cooked eggs, sliced

**½ cup chopped celery**

1/3 cup sweet pickle relish

**2 ½ Tbsp. finely chopped onion**

4 cups mayonnaise, or 2 cups sour cream and 2 cups mayonnaise (This may be too much. Pour carefully)

**¼ cup yellow mustard**

salt and pepper to taste (go heavy on the pepper as the salad will be bland otherwise)

Pour dressing over the ham.



### EChO Back to School Needs

Dividers (5 tab) for three-ring binders (we need 20 sets) \* pads of graph paper \* plastic two pocket folders (plain colors) \* laminated two pocket folders (plain colors) \* reams of copy paper - we need 25-30 \* scientific calculators- we need 5-6 \* composition notebooks--wide ruled \* three ring binders 2-3 inch- white or plain colored \* plastic pencil boxes \* zippered pencil pouches for three ring binders \* bottles of glue\* glue sticks \* rulers \* white board markers both wide-tipped and fine-tip\* washable markers \* spiral notebooks, mostly wide ruled \* children's scissors \* 4-6 inch scissors appropriate for older students \* lunch "boxes"

=====  
We also ask potential donors for money to buy the graphing calculators that AP high school students need.

Need a Notary Public? Stephanie Park is one!

stephaniepark911@gmail.com or 303-564-0210



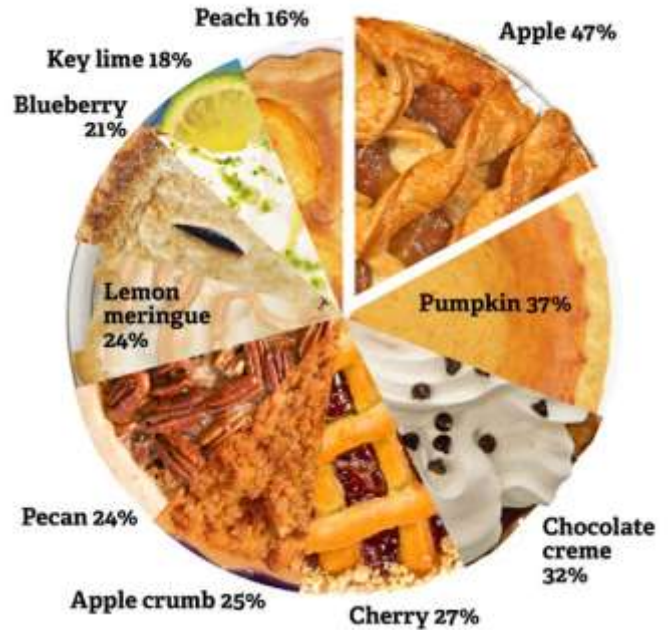


# Yum—Pies and a Party

LOOKING AHEAD: We will have a Pie Feast at the church on September 19 from 4 to 7 pm. For an admittance of ten dollars for adults and 5 dollars for children 5 to 12 (no charge for 4 and under) one can have all the pie one wants. Whole pies will be available as well, and if you want to order a pie, check with the baker to see if s/he will make you one. Homemade ice cream will be available at extra cost. All proceeds will go to finish the bathroom and kitchen at St. Raphael's.

We will need volunteers to bake pies -- all and any kind, including frozen and cream pies as well as fruit, nut, mince or any other. We will need volunteers who have ice cream makers to make their favorite flavors. We will also need volunteers to serve pie and ice cream, take money, set up, clean up and so forth. You will hear more about this but for now --  
**SAVE THE DATE!**

## What are your three most favorite types of pie?



JOIN US TO CELEBRATE STEPHANIE'S  
40TH!

Stephanie & Eric Park  
303-564-0210

Saturday, September 12 from 04:00 PM  
to 8:00 PM

Our Home  
4881 South Amaro Drive Evergreen, CO 80439

Ten women of Transfiguration met Saturday July 25 to restart the ECW (Episcopal Church Women.) We met at St Raphael's and began with a tour of that building. All admired the results so far and commended Cathleen for the way she has decorated and how cleverly she has furnished the rooms with pieces from the EChO and Habitat for Humanity Resale stores. The results, we agreed, were tasteful and inviting.

Cathleen explained that the second floor would be the McManus' private quarters, but the first floor would be open to parish activities. The women noted the unfinished condition of the bathroom and kitchen, and concluded that these must be finished as soon as possible, so that our rector and his wife need no longer live in a perpetual state of construction, with endless dust and noise and workmen constantly in the house. (Cort Langworthy appeared in church the next day to explain that we **don't have any money now to spend on St. Raphael's because people are too far behind in their pledges and if everyone would catch up on their pledges we could finish the project.**)

After the tour, Sara Gaden, acting president, opened the meeting, explaining that ECW has three objectives: outreach, fellowship and spiritual growth. We need to elect a president, a secretary, a treasurer and chairmen for various committees, such as hospitality (taking food to those who need it, providing food for funerals etc.), and fund-raising.

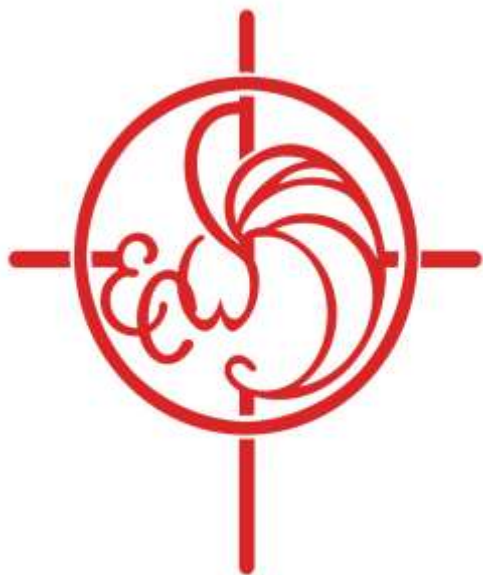
Sara suggested that the ECW minutes be printed in the newsletter and expressed a wish that the vestry minutes be printed there as well. Some thought that would make too long a newsletter but that the minutes of both groups could be posted somewhere or perhaps displayed in the back of the church.

Much of the meeting was spent discussing activities the Transfiguration ECW did in the past and suggesting what we might do in the future.

We decided to **meet at 9 am at St. Raphael's on the second Saturday of each month.** The next meeting will be on August 8th. We decided that the next few meetings would be devoted to fellowship so we can get to know each other before beginning any big projects.

We passed around a paper asking what people would like to do. Gretchen Berggren offered to lead a group from Transfiguration on a mission to Haiti. Everyone else offered to help with hospitality.

All women of Transfiguration are members of the ECW but we urge everyone to become active members and especially to attend the August 8th meeting.





## Kneelers

### *The Tau Cross*

The Tau Cross cushion was donated by Frederic Murray Robinson to honor his twin brother, Charles Michael Robinson. It was stitched by Nan Banker and Dee Macek. Murray was the Senior Warden at the time Father Blakeslee retired, and he guided Transfiguration wisely through the difficult task of replacing a priest who had been here for twenty years.

The Tau cross is associated with Advent, with spiritual renewal, and especially with St. Francis of Assisi. Pope Innocent III called the Fourth Lateran Council in 1215 in an effort to address the great need for reform in the Church and to once again appeal to Christendom, to take back the Holy Land from the Muslims. Present at the meetings was a **poor man in a beggar's robe named Francis Bernadone from Assisi, head of a new order of penitents and mendicant preachers.**

**St. Francis took to heart Innocent's impassioned plea for reform, which the Pope developed from the following text from the prophet Ezekiel: "Go through the city, through Jerusalem, and put a Tau upon the foreheads of the men who sigh and groan over all the abominations that are committed in it... Pass through the city after him, and smite; your eye shall not spare, and you shall show no pity; ...but touch no one upon whom is the Tau."(Ezekiel 9:4-6)**

**"Tau" is the last letter of the Hebrew alphabet and means "mark". In Greek and English transliteration "Tau" takes the form of a letter "T", which is also a variant form of the Cross. St. Jerome and other Fathers of the Church saw the Tau of Ezekiel as a solemn symbol of the Cross of Christ. It is now evoked as a symbol of spiritual renewal in the Church. In this passage from Ezekiel, St. Francis heard the voice of the **Jesus speaking a resounding confirmation of his vocation to "rebuild the Church" by radically embracing the whole Gospel and preaching penance and conversion. The Tau Cross became the mark with which he would sign himself, his brethren and all who would respond to his pleas to repent and believe. His thought that the union with Christ Crucified in the depths of his soul was now externally expressed by the Tau. He set himself and his order to the task of preaching the Gospel with renewed zeal. Finally, St. Francis also saw the humility of the friars minor, called to be the least of all, signified in this last letter of the Hebrew alphabet.****

## *The Black-Eyed Susan*

The name Black-Eyed Susan graces several of our most important and popular wild-flower species. By the way, the flower's eye, or center, is not really black; it's dark brown.

Who was Susan? Well, no one's sure, but the legend says it comes from an Old English poem of the post-Elizabethan era entitled simply, "Black-Eyed Susan," written by the famous poet John Gay, 1685-1732:

All in the downs, the fleet was moored,  
Banners waving in the wind.  
When Black-Eyed Susan came aboard,  
and eyed the burly men.

"Tell me ye sailors, tell me true  
Does my Sweet William sail with you?"

Several stanzas explain that her William was on board, "high upon the yardarm", and he quickly scrambled down for a fond farewell with his lady love. It seems he was off to the high seas, but promised ardently to be safe and true. True to the song, if you seed wild Sweet William with common Black-Eyed Susan, they'll bloom beautifully for you at exactly the same time. Both are basically biennials, and her gold plus his bright reds and purples blooming together is a sight to gladden any gardener's heart.

This is the gorgeous gold wildflower you see everywhere—growing on its own, often in great golden sheets of color along the highway, in unused fields, often in "disturbed ground" and maybe in your own backyard. Generations of American children have picked them in proud bouquets, and they figure importantly in our culture. I've always thought it is the quintessential American wildflower, since it is so widespread and so common, yet so beautiful. Best of all, for gardeners, it's a snap to grow from seed.

## Prayer Shawl Ministry

The Prayer Shawl Ministry meets the first Wednesday of each month at 1 pm in Stewart Lounge. For more information, please contact

Liz Jones at [303/679-1301](tel:3036791301) or

Georgine McCarthy at [303/670-0887](tel:3036700887).

Church of the Transfiguration – Youth Group Calendar:  
August through December 2015

For further information contact: Jennifer Francis – [queenbead72@yahoo](mailto:queenbead72@yahoo) or  
Robyn Mangham – [robynmangham@gmail.com](mailto:robynmangham@gmail.com)

PROJECTS AND EVENTS: **“Pie Social”, coat collection, Haunted House, Advent wreaths, Christmas Companions at Rocky Mountain Village, JAM (Jesus and Me)** on-going at 10:15 Sunday service

AUGUST

8/5 YAC Committee meeting - **St. Raphael’s 6:00 PM**

8/12 **Stargazing and S’Mores in the meadow**—8 PM

SEPTEMBER

9/9 YAC Committee meeting - **St. Raphael’s 6:00 PM**

9/13 Youth Group Meeting at Church 5:00-7:00 PM

9/19 or 9/26 Wings Over the Rockies field trip (Air and Space Museum)  
with Bill Houston at 10:00 AM

OCTOBER

10/4 Youth Group Meeting at Church 5:00-7:00 PM

10/10 YAC Committee Meeting - **St. Raphael’s 6:00**

10/23-25 Diocesan Quest Youth Retreat in Buena Vista

NOVEMBER

11/1 Youth Group Meeting at Church 5:00-7:00 PM

- work on Advent Wreaths

11/11 YAC Committee Meeting – **St. Raphael’s 6:00 PM**

11/15 Youth Group Meeting at Church 5:00-7:00 PM

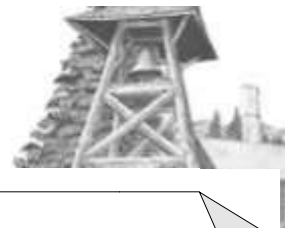
Final assembly of Advent Wreaths; delivery on 11/22

DECEMBER

12/2 YAC Committee Meeting – **St. Raphael’s 6:00 PM**

12/13 Youth Group Meeting – Christmas Companions at Rocky Mountain Village  
(ttba-tentative)





THANK  
YOU!

A big Thank You from Janet Reznik, Director of EDSE, to the Property Committee for coming up with an affordable fence

solution for EDSE, and Thank You to Ken for building it!

**Anne Woodward Douglas' ashes will be moved from Fairmount Cemetery in Denver to the All Souls Columbarium located on the grounds of the Church of the Transfiguration - Episcopal, as part of the 10:15 a.m. service on Sunday, August 9, 2015.** The Rev. Deacon Abby Marsh, goddaughter of Anne Douglas and daughter of The Rev. M. Lewis Marsh, Jr. (Fr. Bud), former rector of this church, will assist Fr. Michael in officiating both the Meadow and the Inurnment Services.

Anne and Charles Winfred Douglas married on 17 Mar 1940.

She co-wrote a biography with Leonard Ellingood about her husband and his composition of church music for the Episcopal Church. She was a leader in both state and national activities of the church.

Born February 22, 1895 in Leadville, CO  
Died March 1, 1985 in Denver, CO



Anne Woodward Douglas

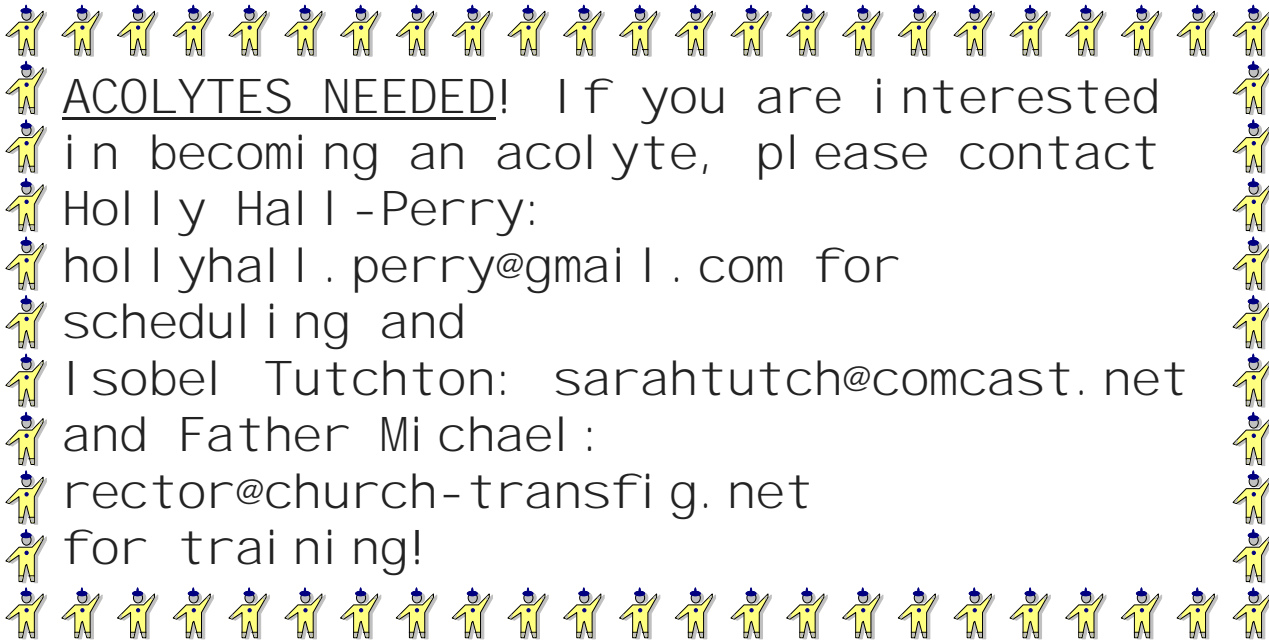
# Youth Mission Trip in Grand Junction, CO July 26-August 1





# Announcements

---

  
**ACOLYTES NEEDED!** If you are interested  
in becoming an acolyte, please contact  
Holly Hall -Perry:  
hollyhall.perry@gmail.com for  
scheduling and  
Isobel Tuthton: sarahutuch@comcast.net  
and Father Michael:  
rector@church-transfig.net  
for training!



  
**Men's Fellowship Breakfast**  
Wednesdays 8 am  
Lakeshore Cafe



## Prayers

---

### **Anointing and Healing Prayers**

Anointing and healing prayers are offered by Father Michael and the Daughters of the King during the 10:15 service on the last Sunday of each month. All are welcome to come to the front of the church after communion for this special offering. This month the prayers will be on **August 30.**

### **Morning Prayer Service**

sponsored by the Daughters of the King and in fellowship with EDSE is offered on **THURSDAY** mornings at 9:30 AM in the church. The Daughters and Friends of the Episcopal Day School extend an invitation to all to attend this wonderful service. Please feel free to walk the Labyrinth after.

### **Evening Prayer Service**

also sponsored by the Daughters of the King is offered on the second and fourth Mondays of each month at 5:30 pm in the Chapel of St. Mary and St. Joseph. The next Evening Prayer services will be **August 10 and 24.**





# Celebrate!!!

## August Birthdays

*Vivian Peters August 3*

*Jeff McCarthy August 4*

*Kay McPeck August 4*

*Joan Shrimpton August 4*

*Dave McDonald August 5*

*Morris Burnham August 6*

*Aaron Hatle August 8*

*Robert Jacobson August 13*

*Marvin Courtney August 18*

*Russell Boley August 21*

*Jean Jacobus August 21*

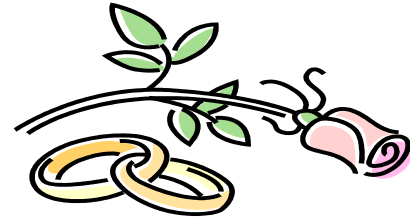
*Elise Poole August 22*

*Polly Boley August 25*

*Devin Black August 27*

*Cathleen McManus August 30*

*Dick Wilson August 30*



## August Anniversaries

*Ray & Pat Crist August 5<sup>th</sup>*

*Robert & Mary Jacobson August 17<sup>th</sup>*

*Marvin & Susan Courtney August 21<sup>st</sup>*



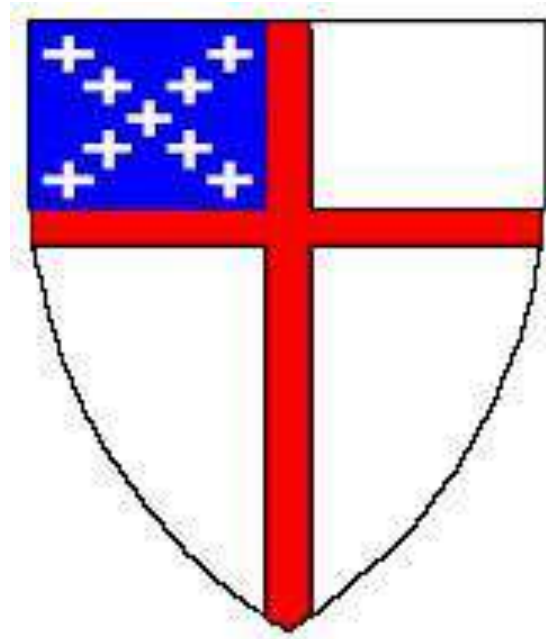
# August 2015

SUNDAY	MONDAY	TUESDAY	WEDNESDAY	THURSDAY	FRIDAY	SATURDAY
Church Douglas Hall St. Raphael's	Meadow St. Mark's	Chapel Stewart Lounge				1 8 am AA 9 Lectio Divina 10 Yard Sale
2 8 am Holy Eucharist 10:15 am Holy Eucharist and Children's Sermon	3 9-3 EDSE 5:30 EDSE Board Meeting	4 9-3 EDSE 6 Vestry	5 9-3 EDSE 6 YAC 7:30 pm AA	6 9-3 EDSE 9:30 Morning Prayer	7 9-3 EDSE	8 8 am AA 9 ECW
9 8 Holy Eucharist 10:15 Holy Eucharist 11:30 Church Cookout	10 9-3 EDSE 5:30 Evening Prayer	11 9-3 EDSE 6 Property Committee 7 EChO Board Meeting	12 9-3 EDSE 7:30 pm AA 8 Youth Group Meteor Shower	13 9-3 EDSE 9:30 Morning Prayer	14 9-3 EDSE	15 8 am AA
16 8 Holy Eucharist 10:15 Holy Eucharist	17 9-3 EDSE 5:30 Vestry	18 9-3 EDSE 5:30 Friendship Bridge	19 9-3 EDSE 7:30 pm AA	20 9-3 EDSE 9:30 Morning Prayer	21 9-3 EDSE	22 8 am AA
23 8 Holy Eucharist 10:15 Holy Eucharist	24 9-3 EDSE 5:30 Evening Prayer	25 9-3 EDSE	26 9-3 EDSE 7:30 pm AA	27 9-3 EDSE	28 9-3 EDSE	29 8 am AA
30 8 Holy Eucharist 10:15 Holy Eucharist with Healing Prayers	31					



THE CHURCH OF THE  
TRANSFIGURATION

27640 Highway 74  
P.O. Box 1630  
Evergreen, Colorado 80439  
303-674-4904



We're on the Web!  
[www.church-transfig.net](http://www.church-transfig.net)

## Newsletter Submissions

Please contact Stephanie Park with ideas, suggestions and monthly reports for the newsletter. Monthly reports to be submitted **no later than the 22nd** of each month.

[stephaniepark911@gmail.com](mailto:stephaniepark911@gmail.com)

303-564-0210



Have something to add to the newsletter?!?!  
Please contact Stephanie Park.  
(see contact information to the left).

Upcoming ideas for pages: recipe exchange,  
community coupons, trivia and games.

ALL IDEAS WELCOME AND  
ENCOURAGED!!!